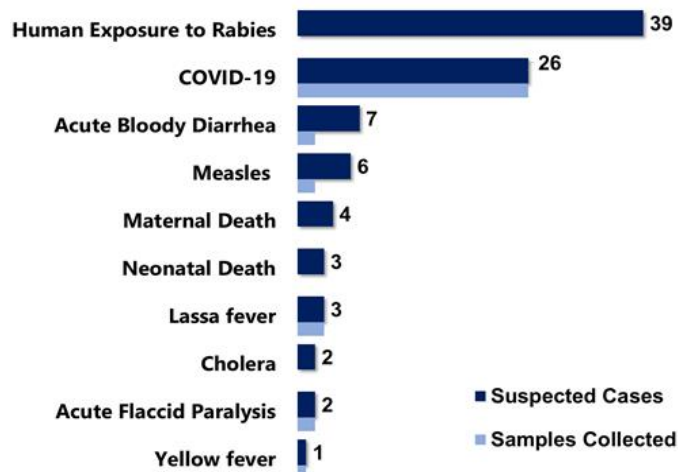


Highlights

Figure 1: Public Health Events Reported during this week



Keynotes and Events of Public Health Significance

- ♦ **A total of 93** events of public health importance including **8** deaths were reported
- ♦ **Completeness and timeliness** of health facility reports were both **100%**
- ♦ **Ongoing Lassa fever outbreak** in Grand Bassa and Bong Counties
- ♦ **Twenty-six** new COVID-19 cases recorded from Montserrado and Bong Counties

Reporting Coverage

Table 1: Health Facility Weekly DSR Reporting Coverage, Liberia, Epi week 3, 2021

County	Expected Report from Health Facility	Reports Received	Received on Time	Completeness (%)	Timeliness (%)
Bomi	26	26	26	100	100
Bong	57	57	57	100	100
Gbarpolu	16	16	15	100	100
Grand Bassa	36	36	36	100	100
Grand Cape Mount	34	34	34	100	100
Grand Gedeh	24	24	24	100	100
Grand Kru	19	19	19	100	100
Lofa	61	61	61	100	100
Margibi	55	55	55	100	100
Maryland	27	27	27	100	100
Montserrado	365	365	365	100	100
Nimba	91	91	91	100	100
Rivercess	20	20	20	100	100
River Gee	20	20	20	100	100
Sinoe	37	37	37	100	100
Liberia	888	888	888	100	100

888(100%)
Health facilities reported IDSR data

93 (100%)
Health districts reported IDSR data

888(100%)
Health facilities reported timely IDSR data

- ♦ The national target for weekly IDSR reporting is 80%. Health facility timeliness is monitored at District level
- ♦ Ten counties submitted their weekly IDSR report to the national level on time
- ♦ Grand Bassa, Nimba, Rivercess, Margibi and Bong Counties submitted late reports

Legend: ≥80 <80

Vaccine Preventable Diseases

Measles

- 👉 Six (6) suspected cases were reported from Montserrado (2), Bong (1), Grand Gedeh (1), Margibi (1), and Lofa (1) Counties
 - Three specimens collected, one tested negative and 2 pending
- 👉 Vaccination status among suspected cases
 - Vaccinated 4 (66%)
 - Not vaccinated 1 (17%)
 - Unknown 1 (17%)
- 👉 Age distribution among suspected cases
 - ≥5 years: 4 (67%)
 - <5 years: 2 (33%)
- 👉 Cumulatively, since Epi week one, ten (10) suspected cases have been reported
- 👉 Epi-classification is as follows: six confirmed (6 clinically confirmed, 0 epi-linked, 0 lab confirmed), and 4 discarded (negative)

Acute Flaccid Paralysis

- 👉 Two (2) cases were reported from Bong, Grand and Margibi Counties
- 👉 Specimens were collected and pending testing
- 👉 Cumulatively, since Epi week one, two (2) cases have been reported

Influenza-Like Illnesses

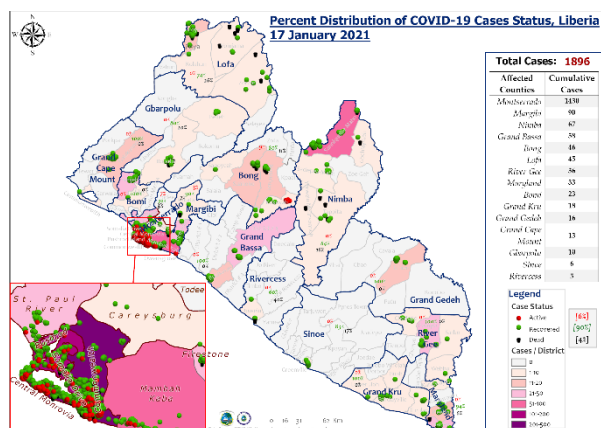
Coronavirus Disease (COVID-19)

Outbreak

- 👉 Twenty-six (26) new confirmed cases were reported from Montserrado (24) and Bong (2) Counties with male accounting for 58%
- 👉 Cumulatively, one thousand eight hundred ninety -six (1,896) confirmed cases recorded since the beginning of the outbreak

Public Health Actions

- 👉 Daily IMS coordination meeting on-going
- 👉 Surveillance activities including active case search, contact tracing and case investigation on-going in affected counties using WHO interim guidelines
- 👉 Monitoring and testing high risk contacts for COVID-19 at POCs and isolation centers
- 👉 Reinforcing hand washing in all public areas (markets, health facilities, public offices, checkpoints etc.)
- 👉 Case management ongoing for confirmed cases



Viral Hemorrhagic Diseases

Lassa fever

- 👉 Three (3) suspected cases were reported from Bong, Grand Kru and Margibi Counties
- 👉 Three specimens were collected and 2 tested:
 - One positive from Bong County, one (1) negative and one (1) pending testing
- 👉 Cumulatively, since Epi week one, five (5) suspected cases have been reported with 2 tested positive, 2 negative and 1 pending testing
 - Proportion of suspected cases with sample collected 100% (5/5)
 - Proportion of suspected cases with sample tested 80% (4/5)
 - Laboratory confirmed: 40% (2/5)
 - Epi-classification; lab-confirmed 2, not a case 2, pending testing

Outbreak

District #3A&B, Grand Bassa County

- The recent case, a 25-year old female and resident of Biabia Camp, LAC Plantation had symptom onset of illness on December 12, 2020 and admitted at the LAC Hospital on December 24, 2020 for malaria Based on the high index of suspicion for Lassa fever, the case was isolated, specimen collected and sent to the National Public Health Reference Laboratory (NPHRL) on December. 25, 2020. The case expired on December 27, 2020 at about 7:00 am and buried the same day under the supervision of the District Health Team. On December 29, 2020, the case was tested positive for Lassa virus. Six contacts were identified and line-listed including 4 high risks (1 health care worker)
- Outbreak began October 17, 2020
- A total of four (4) confirmed cases recorded with female accounting for 75%
 - Case fatality rate recorded is 75% (3/4)
- Twenty-nine contacts generated including 15 healthcare workers and 14 community members
- All contacts completed follow up

Suakoko District, Bong County

- The case, a 39-year old male and resident of Phebe Airstrip had symptom onset of illness on January 10, 2021. Case visited the Phebe Hospital on January 11 2021 and was admitted, specimen collected and sent to the NPHRL on January 11, 2021. The case expired on January 12, 2021 and safe burial was conducted. On January 17., 2021, the case was tested positive for Lassa virus. 21 contacts including 18 health workers were identified and line-listed
- Outbreak began Jan 17, 2021
- A total of one (1) confirmed case recorded

Public Health Actions

- Risk assessment ongoing
- Daily contact follow-up ongoing
- Continue to conduct community engagement on the prevention of Lassa fever and rodents control measure

Yellow fever

- 👉 One (1) suspected case was reported from River Gee County
- 👉 Specimen was collected and pending testing
- 👉 Cumulatively since Epi week one, three (3) suspected cases have been reported with 2 negative, 1 pending
 - Proportion of suspected case with sample collected 100% (3/3)
 - Proportion of suspected case with sample tested 67% (2/3)

Diarrheal Diseases

Acute Bloody Diarrhea (Suspected Shigellosis)

- 👉 Seven (7) cases were reported from Margibi (2), Sinoe (2), Nimba (2), and Lofa (1) Counties
 - Two specimens were collected and pending testing
- 👉 Cumulatively, since Epi week one, seventeen (17) suspected shigellosis cases have been reported

Severe Acute Watery Diarrhea (Suspected Cholera)

- 👉 Two (2) suspected cases were reported from Grand Gedeh and Nimba Counties
 - Specimens were not collected
- 👉 Cumulatively, since Epi week one, eight (7) suspected cholera cases have been reported

Other Reportable Diseases

Animal Bites (Human Exposure to Rabies)

- 👉 Thirty-nine (39) animal bite cases were reported from Montserrado (11), Lofa (10), Nimba (7), Grand Kru (3), Margibi (2) Grand Gedeh (2), Rivercess (2), Bong (1), and Maryland (1) Counties
- 👉 Cumulatively, since Epi week one, eighty-three (85) animal bite cases have been reported

Events of Public Health Importance

Maternal Mortality

- 👉 Four deaths were reported from Nimba (2), Bomi (1) and Montserrado (1) Counties
- 👉 Causes of deaths: post-partum hemorrhage, eclampsia and two pending review
- 👉 Reporting sites: Health facility 4 (100%)
- 👉 Cumulatively, since Epi week one, thirteen (13) deaths have been reported

Neonatal Mortality

- 👉 Three (3) deaths were reported from Maryland, Nimba and River Gee Counties
- 👉 Causes of deaths: asphyxia, preterm and one (1) pending review
- 👉 Reporting sites: Health facility 3 (100%)
- 👉 Cumulatively, since Epi week one, twenty (20) deaths have been reported

Cross Border Surveillance Update

- 👉 A total of 3111 travelers recorded for the week with incoming travelers accounting for 49.4% and outgoing travelers 50.6%
- 👉 Three of the travelers were reactive for COVID-19
- 👉 The airport accounted for the highest number of travelers for the week

Table 2: Cross border activity at the PoE for Incoming and Outgoing Travelers, Liberia, Epi week 3, 2021

Type of PoE	Point of Entry	Weekly total	Arrival	Departure	Yellow Book Issued	Yellow Book Damaged	Card Replaced	Travelers Vaccinated	Alerts Verified	COVID-19 Reactive
Airport	James S. Paynes	37	22	15	0	0	0	0	0	0
	Robert International Airport	2270	1118	1552	12	0	0	0	0	3
Seaport	Freeport of Monrovia	202	101	101	0	0	0	0	0	0
	Buchanan Port	176	88	88	0	0	0	0	0	0
Land Crossing	Bo Water Side	426	207	217	0	0	0	0	0	0
Total travelers for week 3		3,111	1,536	1,575	12	12	0	0	0	3

Public Health Measures

National level

- 👉 Providing technical, logistical and financial support to counties
 - Heighten surveillance in affected and surrounding communities
- 👉 Publishing situational reports to inform stakeholders

County level

- 👉 Publication of situational reports to inform stakeholders
- 👉 Active case search ongoing in affected and surrounding communities
- 👉 Contact tracing, health education, and community engagement ongoing in affected communities
- 👉 Case management ongoing for isolated cases

Appendix

Summary of Immediately Reportable Diseases, Conditions, and Events by County

Counties		Bomi	Bong	GBapo	Grand Bassa	Grand Cape Mount	Grand Gedeh	Grand Kru	Lofa	Margibi	Maryland	Montserrado	Nimba	Rivers	River Gee	Shoeb	Total Weekly	Cumulative Reported	Cumulative Lab-confirmed	
No. of Expected Health District		4	9	5	8	5	6	5	6	4	6	7	6	6	6	10	93			
No. of Health District Reported		4	8	5	8	5	6	5	5	4	6	7	6	6	6	10	91			
Vaccine Preventable Diseases	Acute Flaccid Paralysis (Suspected Polio)	A	0	1	0	0	0	0	0	1	0	0	0	0	0	0	2	2	0	
		D	0	0	0	0	0	0	0	0	0	0	0	0	0	0	0	0	0	
	Measles	A	0	1	0	0	0	1	0	1	1	0	2	0	0	0	0	6	10	0
		D	0	0	0	0	0	0	0	0	0	0	0	0	0	0	0	0	0	0
	Neonatal Tetanus	A	0	0	0	0	0	0	0	0	0	0	0	0	0	0	0	0	0	0
		D	0	0	0	0	0	0	0	0	0	0	0	0	0	0	0	0	0	0
	Yellow fever	A	0	0	0	0	0	0	0	0	0	0	0	0	1	0	0	1	1	0
		D	0	0	0	0	0	0	0	0	0	0	0	0	0	0	0	0	0	0
Viral Hemorrhagic Fever	Dengue fever	A	0	0	0	0	0	0	0	0	0	0	0	0	0	0	0	0	0	0
		D	0	0	0	0	0	0	0	0	0	0	0	0	0	0	0	0	0	0
	Ebola Virus Disease	A	0	0	0	0	0	0	0	0	0	0	0	0	0	0	0	0	0	0
		D	0	0	0	0	0	0	0	0	0	0	0	0	0	0	0	0	0	0
	Lassa fever	A	0	0	0	0	0	0	1	0	1	0	0	0	0	0	0	2	4	1
		D	0	1	0	0	0	0	0	0	0	0	0	0	0	0	0	1	1	1
Influenza-Like Illnesses	COVID-19	A	0	1	0	0	0	0	0	0	0	25	0	0	0	0	26	26	52	
		D	0	0	0	0	0	0	0	0	0	0	0	0	0	0	0	0	0	
Diarrheal Diseases	Acute Bloody Diarrhoea (Shigellosis)	A	0	0	0	0	0	0	0	2	1	0	2	0	0	2	7	17	0	
		D	0	0	0	0	0	0	0	0	0	0	0	0	0	0	0	0	0	
	Severe Acute Watery Diarrhoea (Cholera)	A	0	0	0	0	0	1	0	0	0	0	1	0	0	0	2	8	0	
		D	0	0	0	0	0	0	0	0	0	0	0	0	0	0	0	0	0	0
Events of Public Health Importance	Maternal Mortality	D	1	0	0	0	0	0	0	0	0	2	2	0	0	0	5	13		
	Neonatal Mortality	D	0	0	0	0	0	0	0	1	0	0	1	0	1	0	3	20		
	Adverse Events Following Immunization (AEFI)	A	0	0	0	0	0	0	0	0	0	0	0	0	0	0	0	1	0	
		D	0	0	0	0	0	0	0	0	0	0	0	0	0	0	0	0	0	
	Unexplained Cluster of Health Events/Disease	A	0	0	0	0	0	0	0	0	0	0	0	0	0	0	0	0	0	0
		D	0	0	0	0	0	0	0	0	0	0	0	0	0	0	0	0	0	0
Other Reportable Diseases	Monkeypox	A	0	0	0	0	0	0	0	0	0	0	0	0	0	0	0	0	0	0
		D	0	0	0	0	0	0	0	0	0	0	0	0	0	0	0	0	0	0
	Tuberculosis	A	0	0	0	0	0	0	0	0	0	0	0	0	0	0	0	0	0	0
		D	0	0	0	0	0	0	0	0	0	0	0	0	0	0	0	0	0	0
	Human Exposure to Animals Bites (Suspected Rabies)	A	0	1	0	0	0	2	3	10	2	1	11	7	2	0	0	39	85	0
		D	0	0	0	0	0	0	0	0	0	0	0	0	0	0	0	0	0	0
	Meningitis	A	0	0	0	0	0	0	0	0	0	0	0	0	0	0	0	0	0	0
		D	0	0	0	0	0	0	0	0	0	0	0	0	0	0	0	0	0	0
	Unexplained Cluster of deaths	A	0	0	0	0	0	0	0	0	0	0	0	0	0	0	0	0	0	0
		D	0	0	0	0	0	0	0	0	0	0	0	0	0	0	0	0	0	0
Neglected Tropical Diseases	Buruli Ulcer	A	0	0	0	0	0	0	0	0	0	0	0	0	0	0	0	0	0	0
		D	0	0	0	0	0	0	0	0	0	0	0	0	0	0	0	0	0	0
	Yaws	A	0	0	0	0	0	0	0	0	0	0	0	0	0	0	0	0	0	0
		D	0	0	0	0	0	0	0	0	0	0	0	0	0	0	0	0	0	0
TOTAL		1	5	0	0	0	4	4	11	8	2	40	13	3	1	2	94	188	0	

D = Dead A = Alive

Notes

- 👉 **Completeness** refers to the proportion of expected weekly IDSR reports received (target: $\geq 80\%$)
- 👉 **Timeliness** refers to the proportion of expected weekly IDSR reports received by the next level on time (target: $\geq 80\%$). Time requirement for weekly IDSR reports:
 - Health facility - required on or before 5:00pm every Saturday to the district level
 - Health district - required on or before 5:00pm every Sunday to the county level
 - County - required on or before 5:00pm every Monday to the national level
- 👉 **Non-polio AFP rate** is the proportion of non-polio AFP cases per 100,000 among the estimated population under 15 years of age in 2017 (annual target: $\geq 2/100,000$)
- 👉 **Non-measles febrile rash illness rate** refers to the proportion of Negative measles cases per 100,000 population
- 👉 **Annualized maternal mortality rate** refers to the maternal mortality rate of a given period less than one year and it is the number of maternal deaths per 100,000 live births
- 👉 **Annualized neonatal mortality rate** refers to the neonatal mortality ratio of a given period less than one year and it is the number of neonatal deaths per 1,000 live births
- 👉 **Epi-linked** refers to any suspected case that has not had a specimen taken for serologic confirmation but is linked to a laboratory confirmed case
- 👉 **Confirmed case** refers to a case whose specimen has tested positive or reactive upon laboratory testing, or has been classified as confirmed by either epidemiologic linkage with a confirmed case, or clinical compatibility with the disease or condition

National Public Health Institute of Liberia (NPHIL)

MISSION

To prevent and control public health threats by promoting healthy outcomes and serving as a source of knowledge

VISION

A center of excellence to create health outcomes for Liberians through a strong preventive health system and expertise

Epidemiological bulletin published with support of WHO and CDC

For comments or questions, please contact

Thomas K. Nagbe, MPH

Director,

Infectious Disease and Epidemiology Division

National IHR Focal Person

National Public Health Institute of Liberia

Republic of Liberia

Email: tnknue31112@gmail.com

Phone: +231 886 937386/777442444

Website: www.nphil.gov.lr

Ralph W. Jetoh, MD, MPH

Deputy Director

Infectious Disease and Epidemiology Division

National Public Health Institute of Liberia

Republic of Liberia

Email: ralphica2000@gmail.com

Phone: +231 886526388/777372655

Website: www.nphil.gov.lr

EDITORIAL TEAM

DIDE / NPHIL

R. N. George

A. N. Mianah

I. P. Pewu

T. O. Yeabah

G. B. Williams

S. K. Zayzay

L. W. Colee

T. L. Hall

S. L. Flomo

M. S. Quiah

C. T. Yeah

L. K. Seepoe

W. T. Gayflor

H. M. Sherman

A. B. Corvah

M. G. Jeuronlon

M.D. Vaye

Ministry of Health

WHO – Liberia Office

CDC – Liberia Office

Data sources

Data and information is provided by the fifteen County Surveillance Officers and National Public Health Reference Laboratory via regular weekly reports, telephone calls and email exchanges. Situations are evolving and dynamic therefore numbers stated are subject to change.